



The Colonial Master Gardener

June 2020

PUBLICATION OF JCC/W MASTER GARDENER ASSOCIATION & VIRGINIA COOPERATIVE EXTENSION

THE PRESIDENT'S MESSAGE

BY PATSY MCGRADY

Next Meeting:

Because of the outbreak of the coronavirus, the date of the next meeting has not yet been scheduled.

As T.S. Elliot wrote, "This is the way the world ends. Not with a bang but a whimper."

How many times in life have we found this quote to be true. In March Governor Northam put us on shelter-at-home until June 10. So, June 10 was going to be a big deal. Except apparently not now. On May 15, not June 10, the state moved into Forward Virginia: Phase One, which allows personal service businesses to operate under certain conditions but limits social gatherings to no more than ten people. People are visiting grandchildren. People are dining outside at restaurants where the table spacing does not enforce social distancing. Infection numbers have not decreased substantially over the last month. The weekly infection rate for James City County has been nine-to-eleven during that period. I assume it's no more dangerous here now than it was four weeks ago. But that means that it's no safer here now than it was four weeks ago either. The weekly numbers for the state likewise do not show significant decreases, yet restrictions are being lifted. I'm having a hard time understanding all this but have come to the conclusion that you can't keep people at home forever, and our state, like most other states, has transferred the responsibility of our safety to us. Surely with over 1.5 million infections and around 100,000 deaths we have ample evidence that this is a big deal.

Given that this responsibility has been transferred to us, our May 21 MG board meeting addressed how we can move forward in this year. In looking ahead, we had to consider the VCE MG state guidance, the governor's guidance, and common sense. While we're told that the virus may wane in the summer, we are also told that a resurgence of the virus is expected as restrictions are lifted, and a second wave of infections is likely in the fall. All things considered, we are unlikely to safely resume life as we knew it until a vaccination is developed and we have all been vaccinated. The primary objective of the board is to protect our members while allowing them to participate in activities that adhere to given guidance and common sense. You can think of this as Forward JCCWVG: Phase One (to copy Virginia state terminology).

Meetings: Our goal is to resume monthly meetings via Zoom starting in August. We do not know when the Williamsburg Regional Library will open and will make the auditorium available to us. When that time comes, can we be confident about social distancing entering and exiting the auditorium and maintaining six feet between each person inside? Will members wear masks during the meeting? We cannot reasonably foresee when we can safely start using the auditorium again. But we can use Zoom. Zoom will support up to 100 participants. Our meetings generally have eighty-to-ninety members present. Zoom will enable us to provide monthly programs and conduct business.

Projects: Our most stringent restriction on projects is the VCE MG state guidance, which restricts working in



"Early Morning, Summertime," by Guy Rose, 1920

(The president's message is continued on the next page, page 2)

THE PRESIDENT'S MESSAGE — CONTINUED

2020
MGA Board

President:
Patsy McGrady

President Elect:
Marty Oakes

VP Administration:
Dee Arbegast

VP Projects:
Rick Brown

VP Internal Ed:
Hazel Braxton

Secretary:
Beth Deer

Treasurer:
Kathy Skube

VMGA Rep:
Marilyn Riddle

Past President:
Cathy Hill

*VCE ANR Program
Assistant:*
VACANT

gardens to gardens producing food given to underserved populations. Because this area has done a good job in leveling the curve, I contacted state leadership to ask for a loosening of the restrictions in JCC and Williamsburg, to allow work in any garden. That request was denied. Leadership stated that they want one guidance for the whole state. It is impossible to predict when state leadership will modify guidance.

Our board has decided there should be no direct interaction with the public and especially with children – both for the safety of our MGs and the safety of the public and children. Projects that operate must do so in accordance with VCE guidelines such as social distancing and treatment of tools. The table on page 3 of this newsletter provides our assessment of each project's ability to function under current restrictions. It is critically important that members stay within their own personal risk management levels. No one should feel obligated to work on any project. There is no requirement for twenty hours of service hours this year. Our most important objective is to keep our membership safe. If you disagree with the board's assessment for a given project, please contact me or Rick Brown (ricklin46@cox.net), vice president for projects, to discuss.

In all of the above, we will change as conditions change.

On to other subjects:

Plant Sale: Now planned for June 13 at the meadow behind Fish on Waller Mill Road. MGs will bring their plants to the site on Friday, June 12 and will return to the site on Saturday June 13 to buy plants. All purchases will be payed by check. Everyone must wear masks and observe social distancing. The plant sale team will provide specifics later in this newsletter.

VMS: Our state leadership is replacing VMS with a different software application at the end of the year. Indications are that the new app will be better and will also support the various ways we have been using VMS beyond just inputting project hours. We expect this change to be a good thing.

Newsletter Editor:
Hope Yelich
hopeyelich@gmail.com

The MGA board meets on the third Thursday of each month at 9:30am at the Williamsburg Regional Library, Room B, on Scotland Street, Williamsburg.

PLEASE NOTE:
During the pandemic and while the library remains closed, the board meets through video conferencing.



"Summer (A Trip to the Terem)," by Boris Kustodiev, 1918

Don't forget to check out our Facebook page: <https://www.facebook.com/VCEMasterGardeners/>. Lots of great articles, educational videos, beautiful photographs, upcoming events, and more! Marion Guthrie is doing a great job keeping us up to date, especially during this time when things are changing so frequently.

To get to our VCE James City County/Williamsburg Master Gardener homepage quickly, click on <http://jccwmg.org/wordpress/>

The Colonial Master Gardener June 2020

MG PROJECTS ASSESSMENT AS OF MAY 25, 2020

BY PATSY MCGRADY, PRESIDENT

Any project must adhere to guidelines in VCE guidance such as social distancing.

PROJECT	Status	Notes and Comments
Incredible Edibles	YES	Social distancing and other requirements specified in VCE guidanc.
Master Gardener Plant Sale	YES	Internal to MG. Payment by check only. Must wear masks and practice social distancing.
Mattey's Garden	MOD	With modifications and permission of principal. Focus on maintaining garden. No interaction with children
Blayton School Garden - Summer/Fall 2020	MOD	With permission of appropriate school personnel, stabilization of garden for summer. No interactions with children..
Clara Byrd Baker Garden Club - Summer/Fall 2020	MOD	With permission of appropriate school personnel, stabilization of garden for summer. No interactions with children.
Williamsburg Botanical Garden - EMG Demonstration Gardens	MOD	With modification that must be coordinated with WBG Board.
Everyday Uses of Trees, Hotwater Tract Settlement of Freedom Park	NO	Requires change in VCE guidance
Water Wise Low Maintenance Garden	TBD	Possibly with modifications to be determined.
Farmer's Market at Merchant Square	NO	Probably requires implementation of broad vaccination program.
Help Desk	MOD	Must function remotely. Do not expect to be able to function within VCE spaces until vaccinations are generally available .
Landscape Love - Fall 2020	NO	OK under VA Guidance but depends on relaxed VCE guidance. Also depends on status of ongoing infection rates.
Tree Call - Summer 2020	NO	OK under VA Guidance but depends on relaxed VCE guidance. Also depends on status of ongoing infection rates.
Turf Love/Garden Love	NO	OK under VA Guidance but depends on relaxed VCE guidance. Also depends on status of ongoing infection rates.
Pruning Clinic Jan 2021	TBD	Depends on status of epidemic in early 2021.
CW Arboretum, Educational Tree Tour	NO	Depends on expanded VCE guidance but could work as CW volunteer if CW opens up volunteer work. (Could not count as MG hours)
CW Learning Gardens	NO	Depends on expanded VCE guidance but could work as CW volunteer if CW opens up volunteer work. (Could not count as MG hours)
Speakers Bureau	Maybe	Not in person. Could do via Zoom if that fits the situation.
JCCW Seeds of Learning	TBD	Lost 2020 season. 2021 depends on availability of broad vaccination program.
Therapeutic Gardening	NO	Depends on availability of reliable, broad vaccination program

VACANCY ON THE BOARD

BY DEE ARBEGAST, VICE PRESIDENT FOR ADMINISTRATION

It has been a weird time for all of us who are Master Gardeners. We all miss our programs and actually seeing each other. I know that most of our activities are limited, but we need to plan for the future. We need your help to keep the ball rolling while we are in transition. Part of that future includes filling immediately a new vacancy on our board. Beth Deer, secretary, has some personal demands that prevent her from giving the time to us right now.

If you are interested or know someone who would be a good fit for the position of secretary; please let someone on the nominating committee know:

- Marty Oakes (oakes4@aol.com or 757-784-8495)
- Jennifer Campbell (jenkcampbell@yahoo.com or 757-968-9499)
- Lyn Natanski (ldnat@aol.com or 757-565-4315)
- Dee Arbegast (deearbegast@gmail.com or 757-272-9390)
- Karen Brooks (knbrooks@verizon.net or 757-876-1799)

Also, Kathy Skube, treasurer, expects to move to Alabama in a few months. Fortunately, Linda Nielson has accepted the position of treasurer and will take over from Kathy.

NEWS FROM MATTEY'S GARDEN

BY LOUANN MARTIN, MATTEY'S GARDEN,
MASTER GARDEN MANAGER

Mattey's Garden sits quietly waiting for the children to return this fall. The crops which the students planted last fall, late winter, and early spring are growing beautifully. The garlic is frolicking with volunteer fennel, and both are thriving in each other's company. The strawberries are turning red and feeding the birds and squirrels.



A quiet Mattey's Garden. Photos: Louann Martin.

The peas are five feet tall, and the critter fencing has helped the plants get off to a great start. The alphabet garden is thriving but in desperate need of weeding. Unfortunately, the weeds are not growing in the area of their designated letter, which would make it almost acceptable!

A few butterflies have found the garden when it is warm. There will be plenty of milkweed for them.

The pear tree, which looks beautiful and healthy, is in its second year of a three-year pruning program. Thank you to Harry Fahl, Bill Dichtel, and Elvin Clapp for their work on this project.

The pond still has the mom and dad fish swimming along with some timid frogs. Still an algae experiment, but hopefully, the water will clear up. A perfect hiding area for potential babies.

Mattey's applied and received a \$755 grant this year from the Youth Gardening Grant/Kids Gardening. The grant included tools, watering equipment, and gloves for the children to use in the garden. The school has a grant specialist who was instrumental in applying for the grant. The children will be excited to see the goodies when they come back this fall.



Thrilled that the uvularia came back (our "U" plant).

UPDATE ON THE JUNE 13 INTERNAL PLANT SALE

BY DONNA TIERNEY, PLANT SALE TEAM MEMBER

As promised, your plant sale team has been working hard to organize the upcoming June plant sale, and we are anxious to update you on our progress. We know you are anxious to learn the details, so they are provided below.

When:	Saturday June 13, 2020
Where:	Historic Triangle Community Service Center (HTCSC) 312 Waller Mill Road, Williamsburg, Va., in the back by the community garden
Time:	9:00am—12:00noon
Wear:	Your Master Gardener badge, masks and gloves, and maintain social distance of six feet when shopping, waiting in line, or socializing
Payment:	Checks only
Audience:	Master Gardeners only
Parking:	Park on the far end of the parking lot near FISH

There are currently over seven hundred plants that have been potted, labeled, and donated for this sale! Thank you to all of the donors for making this sale possible. We will send out a copy of the plant inventory before the sale. At the community center, the plants will be organized in alphabetical locations by the first letter of the common name of the plant. Plants will be priced by pot size. Only checks will be accepted for payment—NO CASH OR CREDIT CARDS.

Because we don't know what COVID 19 pandemic changes may be made by the governor prior to the sale, we ask everyone to maintain a social distance of six feet and wear gloves and masks while attending this sale. We will have a volunteer controlling the entrance to the sale to ensure that we don't have too many people selecting plants at the same time.

Be prepared to buy plants: Bring your copy of the plant inventory (it will make it easier for you to locate plants), plastic bags, boxes, and wagons (for those big spenders). We will have no bags or boxes provided at the sale. Have your checkbooks and pens ready at checkout. This is a wonderful opportunity to buy plants to expand or update your gardens. All proceeds from this sale will go to the Master Gardener treasury. We hope that everyone will come out to support our organization.

For those of you who have volunteered to help the plant sale team set up and manage the sale, we will be contacting you shortly about tasks and times. Thank you for your support!

Message to Plant Donors Only

Preparing your plants for donation:

1. Ensure that your plants are clean, pest free, and labeled (Note: plastic labels and markers will be available on site if you need them, but you are responsible for identifying and labeling the plants you donate.) Plants that don't meet these conditions will not be accepted for the sale.
2. Please bring a copy of the plant inventory, as it may help you if you are sorting a large number of plants.

Delivering your plants:

1. Deliver your plants to the Historic Triangle Community Service Center on Friday, June 12, between 10:00am-2:00pm. If your last name begins with letters A-L, please come between 10:00-11:45am. M-Z names please arrive between 11:45am—2:00pm. If your assigned arrival time doesn't work for your schedule that day, please come any time between 10:00am-2:00pm. We are trying to prevent having too many people on site at the same time to promote healthy social distancing.
2. Place your plants in designated alphabetical areas by the first letter of the common name of your plant. If you have a large number of plants to sort, you may want to bring a wagon to make your work easier. No plastic bags or boxes will be available at the center.

At the last minute, if you find you need assistance getting your plants to the Historic Triangle Community Service Center on June 12, please contact Hope Yelich (hopeyelich@gmail.com, or 757-565-1811).



ASIAN GIANT HORNETS

BY PATSY MCGRADY, PRESIDENT

There have been several articles in various media about Asian Giant Hornets (*Vespa mandarinia*) aka the "Murder Hornet."

The North Carolina Cooperative Extension has published articles on this topic that you may want to check out.

From NC Cooperative Extension:

The news media are reporting that the Asian giant hornet (*Vespa mandarinia*) has been found in Washington state. This hornet lives up to its name because the queens are more than two inches long while the workers are about one and one-half inches long. The "murder hornet" nickname given by the media really refers to their well-deserved reputation as a pest because they attack and can destroy an entire bee colony.



Courtesy NUMBERTSBEST, Wikimedia Commons

Asian giant hornets are not an issue for us at this time and not likely to be one in the near future barring some accidental introduction (as was likely the case in Washington). However, everyone needs to be aware that we have a resident hornet species that, at first glance, appears similar to the Asian giant hornet.

Read more at: <https://entomology.ces.ncsu.edu/2020/05/asian-giant-hornets/>

Not a problem for bee keepers yet:

<https://entomology.ces.ncsu.edu/2020/05/asian-giant-hornets-not-a-problem-for-nc-beekeepers-yet/>

There is also a good article in *Smithsonian Magazine's* May 10 *Weekender Newsletter*, with some good video and comparison illustrations, about these pests. Click on https://www.smithsonianmag.com/smart-news/invasion-murder-hornets-180974809/?utm_source=smithsonianopic&utm_medium=email&utm_campaign=20200510-Weekender&spMailingID=42460438&spUserID=NzQwNDU3NjUyNzUS1&spJobID=1760817898&spR



"Advent of Spring and Summer," by David Burliuk, 1914

MASTER GARDENERS BID BARBARA GUSTAFSON GOODBYE BY PATSY MCGRADY, PRESIDENT

Barbara Gustafson departed Williamsburg and moved to Vermont around May 23.

Barbara has been a Master Gardener since 1999 and has served as president. In recent years Barbara focused on Incredible Edibles and the Learning Garden, located just behind Fish on Waller Mill Road. Given our mandate to socially distance at this time, Marty Oakes organized a drive-by caravan to wish Barbara the best in her new home and to express MG gratitude for all she has done for the organization.

On May 20 close to thirty cars gathered at Veterans Park to form a caravan and then proceeded to drive past Barbara's house - twice. The caravan was a surprise, and Barbara seemed very happy to see the caravan and receive the good wishes of the participating MGs.



Photo: Joanne Sheffield



Photos above, to right, and at lower right: Patsy McGrady



Photo: Joanne Sheffield



MEET THE TREES AND SHRUBS OF THE WILLIAMSBURG BOTANICAL GARDEN

BY ELIZABETH MCCOY

Have you ever walked through the garden wondering about the many interesting woody plants growing there? Have you wanted to identify a shrub, learn about its uses, and consider whether to invite its species home to your own garden?

Members of the 2020 Tree Steward class designed a project to identify, inventory, and label woody plants at the garden this year. In late January, the team began meeting with other Tree Stewards and members of the Botanical Garden board to plan their project, learn the necessary skills to measure the height and diameter of trees, and set up record-keeping systems.

Tree Stewards Patsy McGrady and Mitzi Balma generously shared their 2011-2012 project at the WBG to help the team get started. They completed an inventory of selected parts of the native woods at



Photo: Elizabeth McCoy

the garden, which the 2020 team expects to update to show growth over the past eight years. Patsy met with the group to walk them through the area she had inventoried and share her observations.

Rick Brown, Tree Steward coordinator for our JCC/W Tree Stewards, instructed the group in techniques to measure trees, shared information about working with [Plants Map](#) and [QR codes](#), and assisted in countless ways, including consulting on all technical aspects of the project. Carole Black offered guidance on setting up Excel spreadsheets for the data collected during the inventory.

Work on the inventory continued over six weeks, with members working together in the garden to identify, photograph, record, take GPS coordinates, and measure trees. Group members learned to use a variety of

resources, including [Plants Map](#) and [iTree](#).

The group was just finishing the first draft of the inventory when concerns over the Covid-19 virus shut down all in-person projects. But team members have continued to work together remotely to complete some components of the project.

A \$900.00 grant from the Virginia Department of Forestry funded purchase of nearly 120 metal identification tags, with QR codes embedded in each. Team member Bill Dichtel has installed these tags throughout all areas of the garden.

When scanned with a smart phone, each tag links the visitor to an information page about that species, hosted by [Plants Map](#). Each species record includes photos from the WBG of that plant and other information about the species. Team members are still adding information to these files, including information about the species' ecological value.



A tag in the native plant gardens. It's center top and much larger in real life! Photo: Elizabeth McCoy

This article is continued on the next page, page 9

MEET THE TREES AND SHRUBS — CONTINUED



A mapleleaf viburnum (*Viburnum acerifolium*) in the pine woods awaiting tagging. Photo: Elizabeth McCoy

[A digital tour guide to the garden](#) will also be available both on the garden's website and by scanning a QR code posted at the garden's entrance. The guide gives a little background information on each area of the garden and lists some of the labeled species found in that area. The guide was developed in cooperation with Dr. Donna Ware.

Dr. Ware is a professional plant taxonomist and retired curator of the William and Mary herbarium. A favorite memory of hers was exploring botanically the two-acre, hurricane-wrecked parcel that was to become WBG and peg "site natives" to protect before any garden-building activity began. Under a recent board, Dr. Ware was designated the primary "stakeholder" for most of the native plant areas of the site, and two years ago she was named an honorary member of the WBG for her contributions to the garden.

You can preview the digital garden guide before your visit to the garden to plan your visit, or use it during your visit to find trees and shrubs of interest to you. [Plants Map](#) allows us to highlight specific collections of plants, including collections by genus. Both native and non-native woody species are labeled and included in the tour.

The Tree Steward project team is pleased to have the tags installed for summer visitors to the garden. While some components of the project remain on hold until restrictions on working together on site are lifted, this public-facing part of the project is now ready to share. Team members include: Bill Dichtel, Stephanie Lamb, Jayce Griffin, Marion Guthrie, Robert Howell, Harry Fahl, Jerry Woodson and Elizabeth McCoy. All members were able to qualify as Tree Stewards by the end of March.

Our Tree Steward project team has already logged 475 hours working on this project and has more work ahead. In addition to completing the inventory while there are leaves to assist with identification, we also expect to complete an analysis of growth and change in the areas the McGrady/Balma project covered. We will especially look for new species that have appeared over the last eight years and species that may have declined in number. We also plan eventually to have a PowerPoint presentation overview of the garden's woody species.

This has been a tremendous team effort, made possible thanks to the generous assistance given by experienced Tree Stewards, members of the WBG community, [Trees Virginia](#), and [Plants Map](#). We look forward to sharing information about this diverse collection of woody plants with the community and invite all members of our JCC/W Master Gardener Association to visit the garden this summer.

THIS AND THAT

Register for Master Gardener College

Registration is now open for Virtual Master Gardener College, scheduled for June 25 - 28. You can find more details about college, including a full program, here: <https://mastergardener.ext.vt.edu/college/registration/>

Register for the 2020 Virtual MG College: <https://tinyurl.com/2020MGCollege>. Deadline is June 19.



"Summertime," by Mary Cassatt, 1894



"The Rosy Wealth of June," by Henri Fantin-Latour, 1886

Who's Going to Master Gardener College?

I am conducting a quick survey to determine how many of our members are planning to attend Master Gardener College, June 25-28, 2020. If you have not decided, this is a great year to consider attending. Three reasons are that it being held virtually, the cost is only \$50, and you can earn MG volunteer hours.

If you plan to attend please let me know.

—Hazel Braxton, vice president for internal education
rbraxton7@cox.net

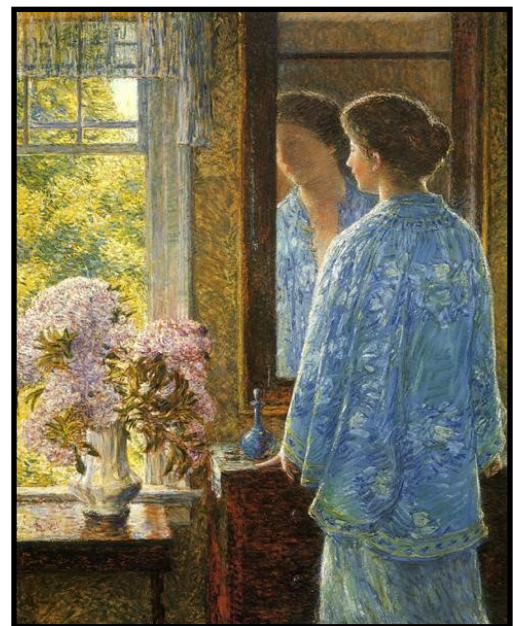
Virginia Native Species Design Contest

The State Extension Master Gardener Office is holding a design contest for prints that will go on t-shirts, tote bags, and other such merchandise that will be sold at the 2021 International Master Gardener Conference (IMGC). The contest is open to Interns, Master Gardeners, Emeritus, Agents, and Coordinators with Virginia Cooperative Extension.

To help highlight our beautiful and diverse state during the conference, we are looking for designs that specifically showcase species that are native to Virginia.

For additional details and the contest rules, please see the IMGC website: <https://www.internationalmastergardener.com/2020/05/18/design-contest/>

Submissions are due through the submission form by Monday, September 7, 2020. Please let me know if you have any questions, reedka@vt.edu.



"Twenty-Six of June," by Childie Hassam, 1912

This and That is continued on the next page, page 11

THIS AND THAT — CONTINUED



"At the Summer House in Twilight," by Isaac Levitan, 1895

News from the Williamsburg Botanical Garden

—Judith Alberts

The Williamsburg Botanical Garden's ongoing honor box plant sale has been very popular. Thank you to all who have visited the garden and purchased plants. We have created a separate signup list to receive emails when we bring in new plants. You might be on the eNews list already, but for honor- box- specific notices (there were four updates within just six days!) sign up at www.bit.ly/honorbox. And a huge Thank You to the tireless WBG volunteers who are keeping the honor box very well stocked with plants that you won't find at most nurseries.

The Williamsburg Botanical Garden's Learn and Grow programs are going virtual! Watch for announcements at www.bit.ly/growatwbg.



"June Sunlight," by Joseph DeCamp, 1902

Online Continuing Education Opportunities

In the May 29 *Biweekly Update* from the state EMG office, Kathleen Reed lists *several* online CE resources MGs can utilize while away from projects. Click on: <https://mastergardener.ext.vt.edu/ce/>



"June," by Thomas Dewing, 1920

Virtual Hike for Hospice House June 20

Since 2013, [Hospice House & Support Care of Williamsburg](#) (HHSCW) has raised over \$600,000 through its annual Hike for Hospice House. Celebrate life walking two miles in honor of loved ones and raise funds in support of this important community resource. See the flyer at the end of this newsletter.

WILDFLOWER OF THE MONTH JUNE 2020

BY HELEN HAMILTON
JOHN CLAYTON CHAPTER, VIRGINIA NATIVE PLANT SOCIETY

SPIDERWORT *Tradescantia virginiana*

A long-blooming native perennial like spiderwort can fit into a lot of spaces in the home garden. Three-petaled flowers form a triangle – they are violet-blue with vivid yellow stamens growing in a three-foot-tall clump. Each flower is open for only a day, in the morning, but they bloom in succession from buds at the ends of stems, from April through July. The flower stems are surrounded by arching green leaves up to one foot long and one inch wide that are erect early in the season but are somewhat drooping in summer.

Spiderwort is not fussy about growing conditions – part shade, medium water, low maintenance – and tolerates clay soil, dry and wet soil. It would fit in a woodland or native garden, naturalized or as a border, along with other perennials that hide the

sprawling leaves late in the season. The plant can self-seed and spread but dead heading will prevent seed set. Spiderwort's blue-violet flowers are attractive with yellow flowers like Green and Gold (*Chrysogonum virginianum*) and black-eyed Susan (*Rudbeckia hirta*). Bumblebees are the principal pollinators.

Two other species of *Tradescantia* grow in Virginia, differing in the appearance of the leaves and flowers. *T. ohiensis* grows in Virginia Beach and the western mountainous counties; *T. subaspera* has been located in the southwestern counties. *T. virginiana* grows west of Richmond and some southeastern counties.

The plant's genus name honors John Tradescant, gardener to Charles I of England and a subscriber to the Virginia Company. John's son traveled to Virginia in the 1630s and sent spiderwort back to England where it became part of the English cottage gardens. It is called spiderwort because the stems when cut secrete a sticky secretion that becomes threadlike and silky as it hardens, like a spider's web. "Wort" is an old English word for plant.

Hybrids are available in the nursery trade with red-purple, pink, or white flowers.



Photo: Spiderwort (*Tradescantia virginiana*) taken by Jan Newton

For more information about native plants,
visit www.vnps.org

Important Dates

- 6/13 MG Internal Plant Sale
- 6/25-28 Master Gardener College. This will be held online this year rather than in Blacksburg.



“A June Morning,” by Robert Julian Onderdonk, 1909

THINKING OF OUR MEMBERS

The organization sends cards to members with difficult medical issues or who have experienced a death in the immediate family. We also acknowledge achievements/milestones and donations made to the association.

This month we sent cards to:

Patty Ridgway—Sympathy
Larry Foster—Get Well

Please provide names to the EMG secretary, Beth Deer, at (757) 435-3183, or elizabethdeer@cox.net

All artistic images in this newsletter are from [WikiArt](#)

NEXT NEWSLETTER DEADLINE

The deadline for submissions to the July 2020 newsletter will be Wednesday, June 24

Please send any submissions to Hope Yelich, newsletter editor, at hopeyelich@gmail.com

JCC/W Master Gardener Mission Statement

The purpose of the James City County/ Williamsburg Master Gardener is to learn, educate, and communicate environmentally sound horticultural practices to the community. Trained by the Virginia Cooperative Extension, Master Gardener volunteers are committed to offering information to the public through sustainable landscape management educational programs.

ABOUT THE VIRGINIA MASTER GARDENERS AND VIRGINIA COOPERATIVE EXTENSION

Virginia Master Gardeners are volunteer educators who work within their communities to encourage and promote environmentally sound horticulture practices through sustainable landscape management education and training. As an educational program of Virginia Cooperative Extension, Virginia Master Gardeners bring the resources of Virginia's land-grant universities, Virginia Tech and Virginia State University, to the people of the commonwealth.

Virginia Cooperative Extension programs and employment are open to all, regardless of age, color, disability, gender, gender identity, gender expression, national origin, political affiliation, race, religion, sexual orientation, genetic information, veteran status, or any other basis protected by law. An equal opportunity/affirmative action employer. Issued in furtherance of Cooperative Extension work, Virginia Polytechnic Institute and State University, Virginia State University, and the U.S. Department of Agriculture cooperating. Edwin J. Jones, Director, Virginia Cooperative Extension, Virginia Tech, Blacksburg; M. Ray McKinnie, Interim Administrator, 1890 Extension Program, Virginia State University, Petersburg.

8th Annual



Hike for Hospice House

A Virtual Gathering

This year's Hike for Hospice House is a virtual event! Walk solo, as a couple, or join friends and neighbors to walk in honor or memory of a friend or loved one. Tell your friends and neighbors so they too can register to support you and Hospice House & Support Care of Williamsburg. Map out a 2-mile route in advance in your neighborhood or community and complete your hike anytime between 9 AM and 12 Midnight on June 20.

The Hike for Hospice House is open to anyone who is looking for an affordable way to get outdoors, honor the memory of someone in their lives and to support Hospice House & Support Care of Williamsburg in its commitment to provide access to compassionate supportive hospice care to individuals in the community at no cost to their family.



June 20, 2020 9:00am - 12m

Presented By:



HOW TO REGISTER or MAKE A
DONATION:

Visit www.hikeforhospicehouse.org

REGISTRATION FEE: \$30/Hiker through
June 1, \$35/Hiker After June 1



Questions? Contact 757-253-1220
4445 Powhatan Parkway, Williamsburg, VA 23188
www.williamsburghospice.org

****Please hike responsibly. All participants are expected to adhere to all CDC guidelines for social distancing****